

# CXCR3 Antibody



PACO06388

---

## Product Information

**Size:**

50ug

**Reactivity:**

Human

**Source:**

Rabbit

**Isotype:**

IgG

**Applications:**

ELISA, WB

**Recommended dilutions:**

ELISA:1:5000, WB:1:500-1:2000

**Protein Background:**

**Gene ID:**

CXCR3

**Uniprot**

P49682

**Synonyms:**

CXCR3; GPR9; C-X-C chemokine receptor type 3; CXC-R3; CXCR-3; CKR-L2; G protein-coupled receptor 9; Interferon-inducible protein 10 receptor; IP-10 receptor; CD antigen CD183

**Immunogen:**

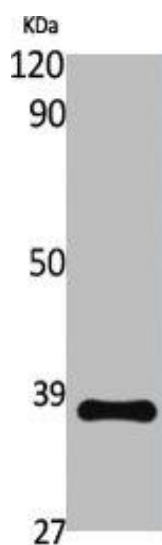
Synthesized peptide derived from the Internal region of human CXCR-3.

**Storage:**

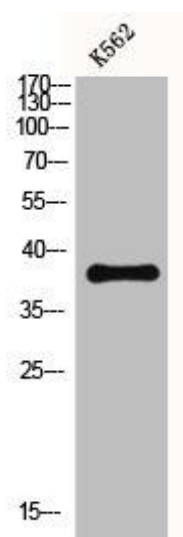
Liquid in PBS containing 50% glycerol, 0.5% BSA and 0.02% sodium azide.

## Product Images

---



Western Blot analysis of various cells using CXCR-3 Polyclonal Antibody.



Western Blot analysis of K562 cells using CXCR-3 Polyclonal Antibody.