

# CCNA1/CCNA2 Antibody



PACO06389

---

## Product Information

**Size:**

50ug

**Reactivity:**

Human, Mouse, Rat, Monkey

**Source:**

Rabbit

**Isotype:**

IgG

**Applications:**

ELISA, WB, IHC, IF

**Recommended dilutions:**

ELISA:1:10000, WB:1:500-1:2000,  
IHC:1:100-1:300, IF:1:200-1:1000

**Protein Background:****Gene ID:**

CCNA1/CCNA2

**Uniprot**

P78396/P20248

**Synonyms:**

CCNA1; Cyclin-A1; CCNA2; CCN1; CCNA; Cyclin-A2; Cyclin-A

**Immunogen:**

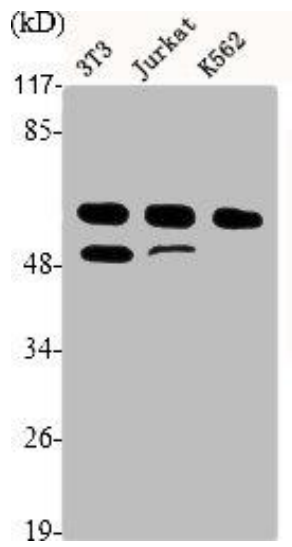
Synthesized peptide derived from the Internal region of human Cyclin A.

**Storage:**

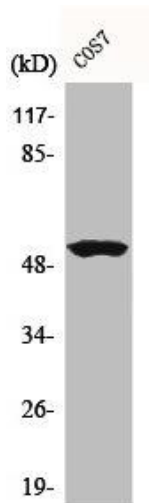
Liquid in PBS containing 50% glycerol, 0.5% BSA and 0.02% sodium azide.

## Product Images

---



Western Blot analysis of NIH-3T3 Jurkat K562 cells using Cyclin A Polyclonal Antibody.



Western Blot analysis of COS7 cells using Cyclin A Polyclonal Antibody.