

CCND1 Antibody



PACO06392

Product Information

Size:

50ug

Reactivity:

Human, Mouse, Rat

Source:

Rabbit

Isotype:

IgG

Applications:

ELISA, WB, IHC

Recommended dilutions:

ELISA:1:40000, WB:1:500-1:2000,
IHC:1:100-1:300

Protein Background:

Gene ID:

CCND1

Uniprot

P24385

Synonyms:

CCND1; BCL1; PRAD1; G1/S-specific cyclin-D1; B-cell lymphoma 1 protein; BCL-1; BCL-1 oncogene; PRAD1 oncogene

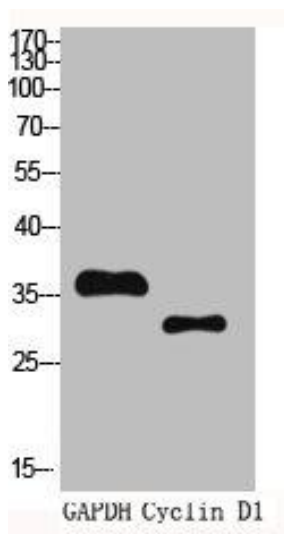
Immunogen:

Synthesized peptide derived from human Cyclin D1 around the non-phosphorylation site of T286.

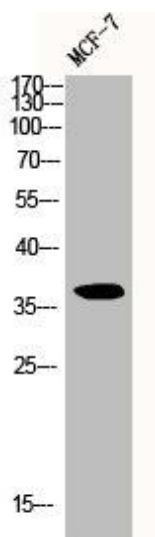
Storage:

Liquid in PBS containing 50% glycerol, 0.5% BSA and 0.02% sodium azide.

Product Images



Western Blot analysis of HELA cells using Cyclin D1 Polyclonal Antibody.



Western Blot analysis of MCF-7 cells using Cyclin D1 Polyclonal Antibody.