

CYP3A4 Antibody



PACO06402

Product Information

Size:

50ug

Reactivity:

Human

Source:

Rabbit

Isotype:

IgG

Applications:

ELISA, WB, IHC

Recommended dilutions:

ELISA:1:5000, WB:1:500-1:2000, IHC:1:100-1:300

Protein Background:

Gene ID:

CYP3A4

Uniprot

P08684

Synonyms:

CYP3A4; CYP3A3; Cytochrome P450 3A4; 1; 8-cineole 2-exo-monooxygenase; Albendazole monooxygenase; Albendazole sulfoxidase; CYP11A3; CYP11A4; Cytochrome P450 3A3; Cytochrome P450 HLP; Cytochrome P450 NF-25; Cytochrome P450-PCN1; Nifedipine

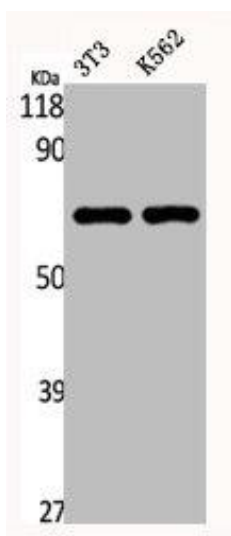
Immunogen:

Synthesized peptide derived from the Internal region of human CYP3A4.

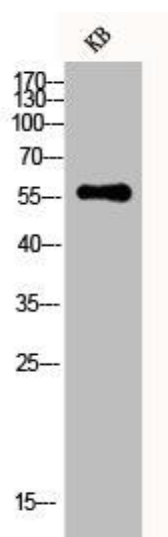
Storage:

Liquid in PBS containing 50% glycerol, 0.5% BSA and 0.02% sodium azide.

Product Images



Western Blot analysis of NIH-3T3 K562 cells using CYP3A4 Polyclonal Antibody.



Western Blot analysis of KB cells using CYP3A4 Polyclonal Antibody.