

CYSLTR2 Antibody



PACO06405

Product Information

Size:

50ug

Reactivity:

Human

Source:

Rabbit

Isotype:

IgG

Applications:

ELISA, WB, IF

Recommended dilutions:

ELISA:1:40000, WB:1:500-1:2000, IF:1:200-1:1000

Protein Background:

Gene ID:

CYSLTR2

Uniprot

Q9NS75

Synonyms:

CYSLTR2; CYSLT2; CYSLT2R; PSEC0146; Cysteinyl leukotriene receptor 2; CysLTR2; G-protein coupled receptor GPCR21; hGPCR21; G-protein coupled receptor HG57; HPN321

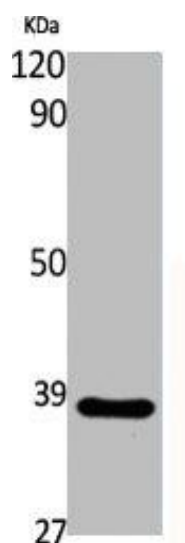
Immunogen:

Synthesized peptide derived from the C-terminal region of human CysLTR2.

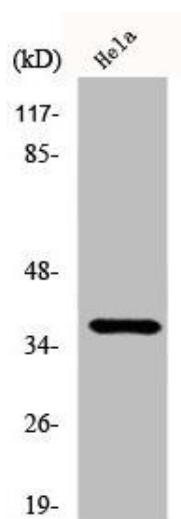
Storage:

Liquid in PBS containing 50% glycerol, 0.5% BSA and 0.02% sodium azide.

Product Images



Western Blot analysis of various cells using CysLTR2 Polyclonal Antibody.



Western Blot analysis of HeLa cells using CysLTR2 Polyclonal Antibody.