

PACO06406

Product Information

Size:

50ug

Reactivity:

Human

Source:

Rabbit

Isotype:

IgG

Applications:

ELISA, WB, IHC, IF

Recommended dilutions:

ELISA:1:5000, WB:1:500-1:2000, IHC:1:100-1:300, IF:1:200-1:1000

Protein Background:

Gene ID:

CSTA

Uniprot

P01040

Synonyms:

CSTA; STF1; STFA; Cystatin-A; Cystatin-AS; Stefin-A

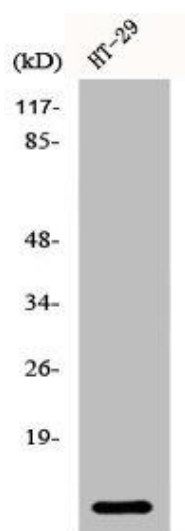
Immunogen:

Synthesized peptide derived from the Internal region of human Cystatin A.

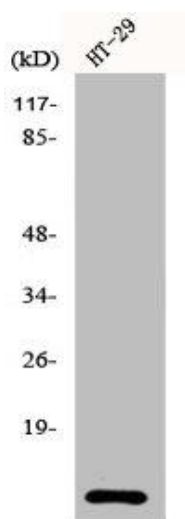
Storage:

Liquid in PBS containing 50% glycerol, 0.5% BSA and 0.02% sodium azide.

Product Images



Western Blot analysis of HT29 cells using Cystatin A Polyclonal Antibody.



Western Blot analysis of HT29 cells using Cystatin A Polyclonal Antibody.