

KRT13 Antibody



PACO06410

Product Information

Size:

50ug

Reactivity:

Human, Mouse, Rat

Source:

Rabbit

Isotype:

IgG

Applications:

ELISA, WB, IHC

Recommended dilutions:

ELISA:1:5000, WB:1:500-1:2000, IHC:1:100-1:300

Protein Background:

Gene ID:

KRT13

Uniprot

P13646

Synonyms:

KRT13; Keratin; type I cytoskeletal 13; Cytokeratin-13; CK-13; Keratin-13; K13

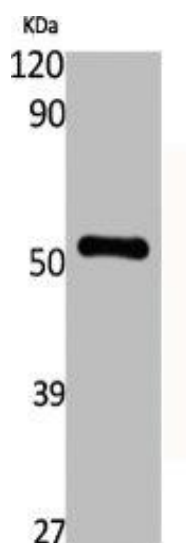
Immunogen:

Synthesized peptide derived from the Internal region of human Cytokeratin 13.

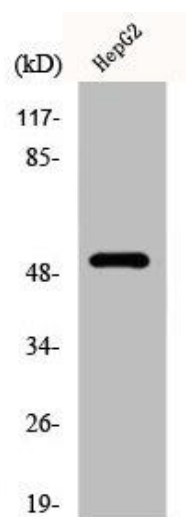
Storage:

Liquid in PBS containing 50% glycerol, 0.5% BSA and 0.02% sodium azide.

Product Images



Western Blot analysis of various cells using Cytokeratin 13 Polyclonal Antibody.



Western Blot analysis of HepG2 cells using Cytokeratin 13 Polyclonal Antibody.