

# KRT15 Antibody



PACO06411

---

## Product Information

**Size:**

50ug

**Reactivity:**

Human, Mouse, Rat, Monkey

**Source:**

Rabbit

**Isotype:**

IgG

**Applications:**

ELISA, WB, IHC

**Recommended dilutions:**

ELISA:1:20000, WB:1:500-1:2000,  
IHC:1:100-1:300

**Protein Background:****Gene ID:**

KRT15

**Uniprot**

P19012

**Synonyms:**

KRT15; KRTB; Keratin; type I cytoskeletal 15; Cytokeratin-15; CK-15; Keratin-15; K15

**Immunogen:**

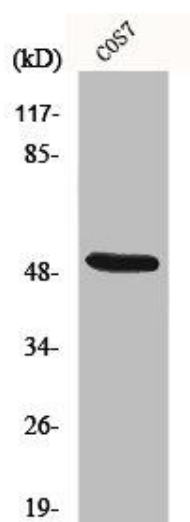
Synthesized peptide derived from the N-terminal region of human Cytokeratin 15.

**Storage:**

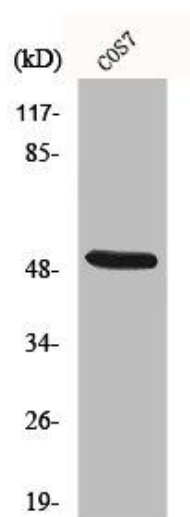
Liquid in PBS containing 50% glycerol, 0.5% BSA and 0.02% sodium azide.

## Product Images

---



Western Blot analysis of COS7 cells using Cytokeratin 15 Polyclonal Antibody.



Western Blot analysis of COS7 cells using Cytokeratin 15 Polyclonal Antibody.