

KRT18 Antibody



PACO06412

Product Information

Size:

50ug

Reactivity:

Human, Mouse, Rat

Source:

Rabbit

Isotype:

IgG

Applications:

ELISA, WB, IHC, IF, IP

Recommended dilutions:

ELISA:1:40000, WB:1:500-1:2000,
IHC:1:100-1:300, IP:2-5ug, IF:1:200-1:1000,

Protein Background:**Gene ID:**

KRT18

Uniprot

P05783

Synonyms:

KRT18; CYK18; PIG46; Keratin; type I cytoskeletal 18; Cell proliferation-inducing gene 46 protein; Cytokeratin-18; CK-18; Keratin-18; K18

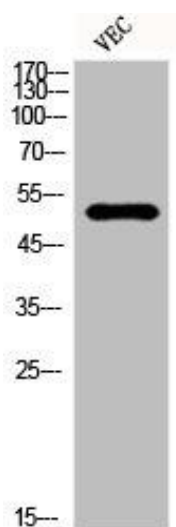
Immunogen:

Synthesized peptide derived from human Cytokeratin 18 around the non-phosphorylation site of S33.

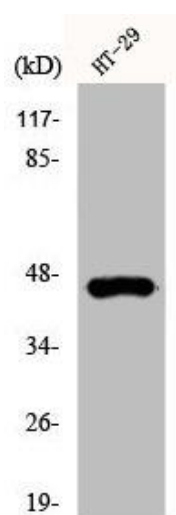
Storage:

Liquid in PBS containing 50% glycerol, 0.5% BSA and 0.02% sodium azide.

Product Images



Western Blot analysis of VEC cells using Cytokeratin 18 Polyclonal Antibody.



Western Blot analysis of HT29 cells using Cytokeratin 18 Polyclonal Antibody.