

KRT7 Antibody



PACO06416

Product Information

Size:

50ug

Reactivity:

Human

Source:

Rabbit

Isotype:

IgG

Applications:

ELISA, WB, IHC, IF

Recommended dilutions:

ELISA:1:40000, WB:1:500-1:2000,
IHC:1:100-1:300, IF:1:200-1:1000

Protein Background:

Gene ID:

KRT7

Uniprot

P08729

Synonyms:

KRT7; SCL; Keratin; type II cytoskeletal 7; Cytokeratin-7; CK-7; Keratin-7; K7; Sarcolectin;
Type-II keratin Kb7

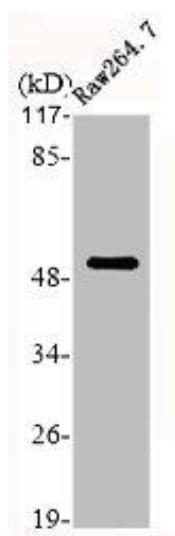
Immunogen:

Synthesized peptide derived from the C-terminal region of human Cytokeratin 7.

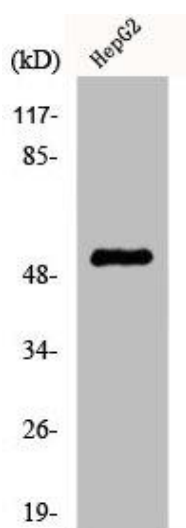
Storage:

Liquid in PBS containing 50% glycerol, 0.5% BSA and 0.02% sodium azide.

Product Images



Western Blot analysis of RAE264.7 cells using Cytokeratin 7 Polyclonal Antibody.



Western Blot analysis of HepG2 cells using Cytokeratin 7 Polyclonal Antibody.