

# KRT8 Antibody



PACO06417

---

## Product Information

**Size:**

50ug

**Reactivity:**

Human, Mouse, Rat

**Source:**

Rabbit

**Isotype:**

IgG

**Applications:**

ELISA, WB, IHC, IF

**Recommended dilutions:**

ELISA:1:5000, WB:1:500-1:2000, IHC:1:100-1:300, IF:1:200-1:1000

**Protein Background:****Gene ID:**

KRT8

**Uniprot**

P05787

**Synonyms:**

KRT8; CYK8; Keratin; type II cytoskeletal 8; Cytokeratin-8; CK-8; Keratin-8; K8; Type-II keratin Kb8

**Immunogen:**

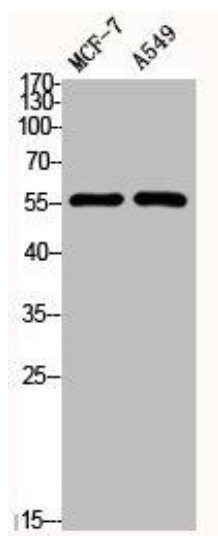
Synthesized peptide derived from human Cytokeratin 8 around the non-phosphorylation site of S432.

**Storage:**

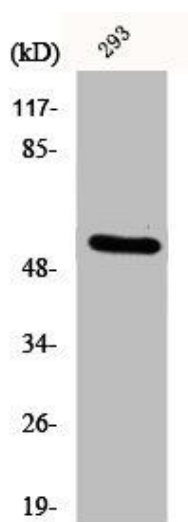
Liquid in PBS containing 50% glycerol, 0.5% BSA and 0.02% sodium azide.

## Product Images

---



Western Blot analysis of MCF7 A549 cells using Cytokeratin 8 Polyclonal Antibody.



Western Blot analysis of 293 cells using Cytokeratin 8 Polyclonal Antibody.