

DRD4 Antibody



PACO06418

Product Information

Size:

50ug

Reactivity:

Human, Mouse, Rat

Source:

Rabbit

Isotype:

IgG

Applications:

ELISA, WB, IF

Recommended dilutions:

ELISA:1:40000, WB:1:500-1:2000, IF:1:200-1:1000

Protein Background:

Gene ID:

DRD4

Uniprot

P21917

Synonyms:

DRD4; D(4) dopamine receptor; D(2C) dopamine receptor; Dopamine D4 receptor

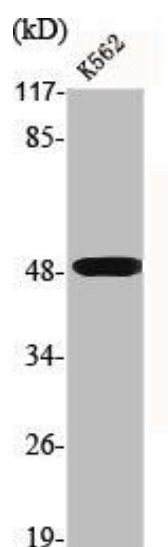
Immunogen:

Synthesized peptide derived from the C-terminal region of human D4DR.

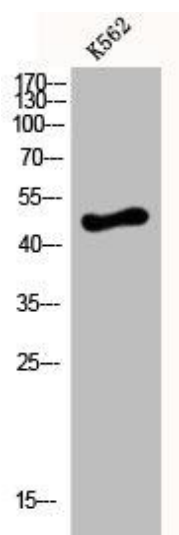
Storage:

Liquid in PBS containing 50% glycerol, 0.5% BSA and 0.02% sodium azide.

Product Images



Western Blot analysis of K562 cells using D4DR Polyclonal Antibody.



Western Blot analysis of K562 cells using D4DR Polyclonal Antibody.