

PACO06423

Product Information

Size:

50ug

Reactivity:

Human, Monkey

Source:

Rabbit

Isotype:

IgG

Applications:

ELISA, WB

Recommended dilutions:

ELISA:1:40000, WB:1:500-1:2000

Protein Background:**Gene ID:**

GC

Uniprot

P02774

Synonyms:

GC; Vitamin D-binding protein; DBP; VDB; Gc-globulin; Group-specific component

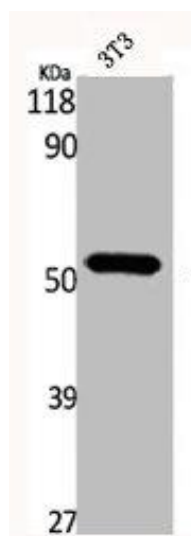
Immunogen:

Synthesized peptide derived from the Internal region of human DBP.

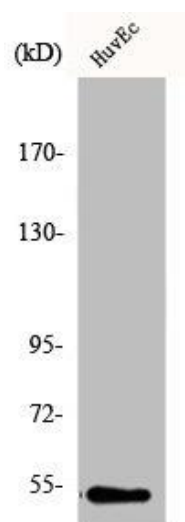
Storage:

Liquid in PBS containing 50% glycerol, 0.5% BSA and 0.02% sodium azide.

Product Images



Western Blot analysis of NIH-3T3 cells using DBP Polyclonal Antibody.



Western Blot analysis of COS7 cells using DBP Polyclonal Antibody.