

DOK2 Antibody



PACO06433

Product Information

Size:

50ug

Reactivity:

Human, Mouse

Source:

Rabbit

Isotype:

IgG

Applications:

ELISA, WB, IHC, IF

Recommended dilutions:

ELISA:1:20000, WB:1:500-1:2000,
IHC:1:100-1:300, IF:1:200-1:1000

Protein Background:**Gene ID:**

DOK2

Uniprot

O60496

Synonyms:

DOK2; Docking protein 2; Downstream of tyrosine kinase 2; p56(dok-2)

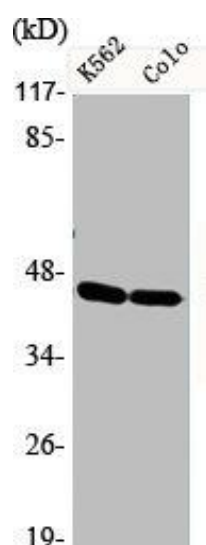
Immunogen:

Synthesized peptide derived from human Dok-2 around the non-phosphorylation site of Y299.

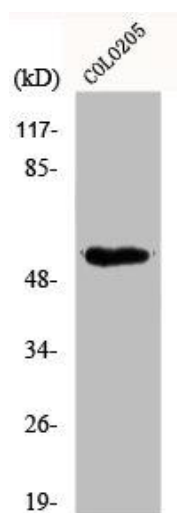
Storage:

Liquid in PBS containing 50% glycerol, 0.5% BSA and 0.02% sodium azide.

Product Images



Western Blot analysis of K562 LOVO cells using Dok-2 Polyclonal Antibody.



Western Blot analysis of COLO205 cells using Dok-2 Polyclonal Antibody.