

KCNIP3 Antibody



PACO06436

Product Information

Size:

50ug

Reactivity:

Human, Mouse

Source:

Rabbit

Isotype:

IgG

Applications:

ELISA, WB, IHC, IF

Recommended dilutions:

ELISA:1:20000, WB:1:500-1:2000,
IHC:1:100-1:300, IF:1:200-1:1000

Protein Background:**Gene ID:**

KCNIP3

Uniprot

Q9Y2W7

Synonyms:

KCNIP3; CSEN; DREAM; KCHIP3; Calsenilin; A-type potassium channel modulatory protein 3; DRE-antagonist modulator; DREAM; Kv channel-interacting protein 3; KCHIP3

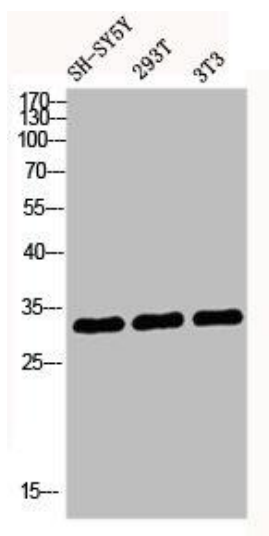
Immunogen:

Synthesized peptide derived from human DREAM around the non-phosphorylation site of S63.

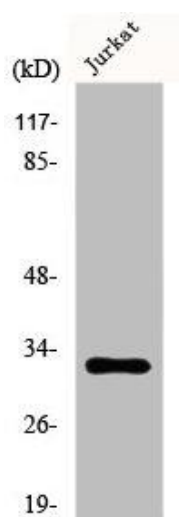
Storage:

Liquid in PBS containing 50% glycerol, 0.5% BSA and 0.02% sodium azide.

Product Images



Western blot analysis of SH-SY5Y 293T 3T3 lysis using DREAM antibody.



Western Blot analysis of MCF7 cells using DREAM Polyclonal Antibody.