

# RCAN1 Antibody



PACO06439

---

## Product Information

**Size:**

50ug

**Reactivity:**

Human, Mouse, Rat

**Source:**

Rabbit

**Isotype:**

IgG

**Applications:**

ELISA, WB

**Recommended dilutions:**

ELISA:1:10000, WB:1:500-1:2000

**Protein Background:****Gene ID:**

RCAN1

**Uniprot**

P53805

**Synonyms:**

RCAN1; ADAPT78; CSP1; DSC1; DSCR1; Calcipressin-1; Adapt78; Down syndrome critical region protein 1; Myocyte-enriched calcineurin-interacting protein 1; MCIP1; Regulator of calcineurin 1

**Immunogen:**

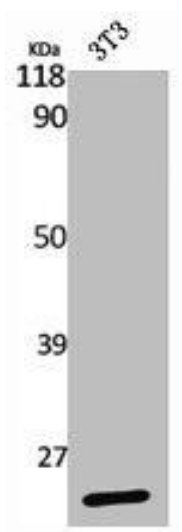
Synthesized peptide derived from the C-terminal region of human DSCR 1.

**Storage:**

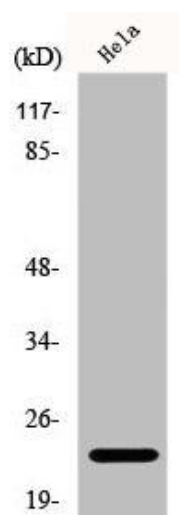
Liquid in PBS containing 50% glycerol, 0.5% BSA and 0.02% sodium azide.

## Product Images

---



Western Blot analysis of NIH-3T3 cells using DSCR 1 Polyclonal Antibody.



Western Blot analysis of HeLa cells using DSCR 1 Polyclonal Antibody.