

# E2F6 Antibody



PACO06442

---

## Product Information

**Size:**

50ug

**Reactivity:**

Human, Mouse, Rat

**Source:**

Rabbit

**Isotype:**

IgG

**Applications:**

ELISA, WB, IHC

**Recommended dilutions:**

ELISA:1:20000, WB:1:500-1:2000,  
IHC:1:100-1:300

**Protein Background:****Gene ID:**

E2F6

**Uniprot**

O75461

**Synonyms:**

E2F6; Transcription factor E2F6; E2F-6

**Immunogen:**

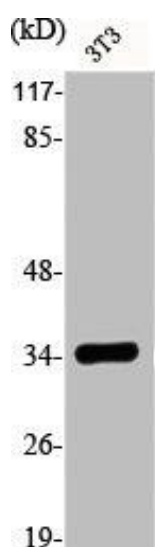
Synthesized peptide derived from the Internal region of human E2F-6.

**Storage:**

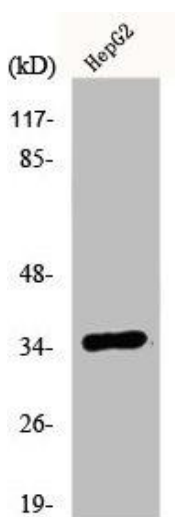
Liquid in PBS containing 50% glycerol, 0.5% BSA and 0.02% sodium azide.

## Product Images

---



Western Blot analysis of NIH-3T3 cells using E2F-6 Polyclonal Antibody.



Western Blot analysis of HepG2 cells using E2F-6 Polyclonal Antibody.