

S1PR1 Antibody



PACO06445

Product Information

Size:

50ug

Reactivity:

Human, Mouse, Rat

Source:

Rabbit

Isotype:

IgG

Applications:

ELISA, WB, IF

Recommended dilutions:

ELISA:1:5000, WB:1:500-1:2000, IF:1:200-1:1000

Protein Background:**Gene ID:**

S1PR1

Uniprot

P21453

Synonyms:

S1PR1; CHEDG1; EDG1; Sphingosine 1-phosphate receptor 1; S1P receptor 1; S1P1; Endothelial differentiation G-protein coupled receptor 1; Sphingosine 1-phosphate receptor Edg-1; S1P receptor Edg-1; CD antigen CD363

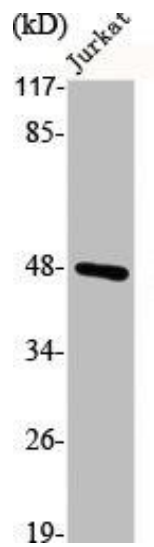
Immunogen:

Synthesized peptide derived from human EDG-1 around the non-phosphorylation site of T236.

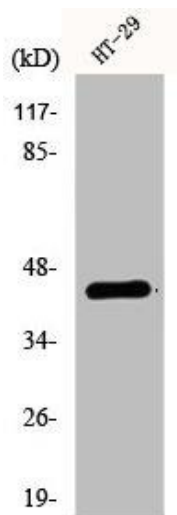
Storage:

Liquid in PBS containing 50% glycerol, 0.5% BSA and 0.02% sodium azide.

Product Images



Western Blot analysis of Jurkat cells using EDG-1 Polyclonal Antibody.



Western Blot analysis of A549 cells using EDG-1 Polyclonal Antibody.