

# KLF1/KLF5/KLF7 Antibody



PACO06456

---

## Product Information

**Size:**

50ug

**Reactivity:**

Human, Mouse, Rat

**Source:**

Rabbit

**Isotype:**

IgG

**Applications:**

ELISA, WB, IF

**Recommended dilutions:**

ELISA:1:20000, WB:1:500-1:2000, IF:1:200-1:1000

**Protein Background:**

**Gene ID:**

KLF1/KLF5/KLF7

**Uniprot**

Q13351/Q13887/O75840

**Synonyms:**

KLF1; EKLF; Krueppel-like factor 1; Erythroid krueppel-like transcription factor; EKLF; KLF5; BTEB2; CKLF; IKLF; Krueppel-like factor 5; Basic transcription element-binding protein 2; BTE-binding protein 2; Colon krueppel-like factor; GC-bo

**Immunogen:**

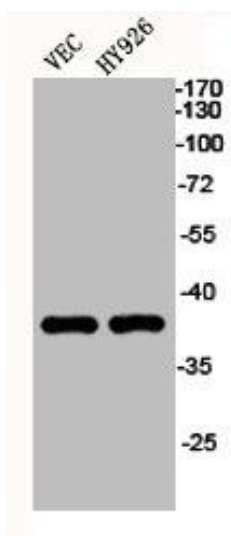
Synthesized peptide derived from the C-terminal region of human EKLF/CKLF/UKLF.

**Storage:**

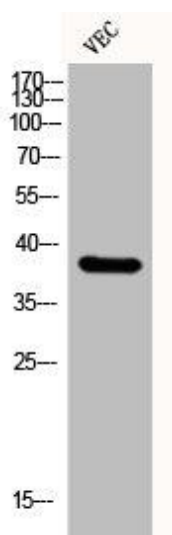
Liquid in PBS containing 50% glycerol, 0.5% BSA and 0.02% sodium azide.

## Product Images

---



Western Blot analysis of VEC HY926 cells using EKLF/CKLF/UKLF Polyclonal Antibody.



Western Blot analysis of VEC cells using EKLF/CKLF/UKLF Polyclonal Antibody.