

ENO2 Antibody



PACO06460

Product Information

Size:

50ug

Reactivity:

Human, Mouse, Rat

Source:

Rabbit

Isotype:

IgG

Applications:

ELISA, WB, IHC, IF

Recommended dilutions:

ELISA:1:10000, WB:1:500-1:2000,
IHC:1:100-1:300, IF:1:200-1:1000

Protein Background:

Gene ID:

ENO2

Uniprot

P09104

Synonyms:

ENO2; gamma-enolase; 2-phospho-D-glycerate hydro-lyase; Enolase 2; Neural enolase; Neuron-specific enolase; NSE

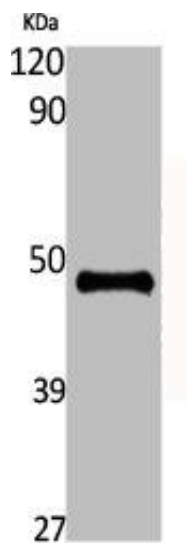
Immunogen:

Synthesized peptide derived from the C-terminal region of human Enolase.

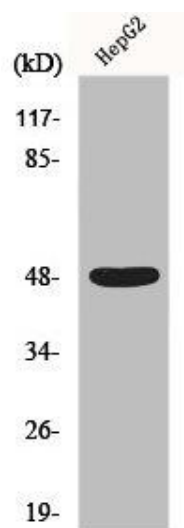
Storage:

Liquid in PBS containing 50% glycerol, 0.5% BSA and 0.02% sodium azide.

Product Images



Western Blot analysis of various cells using Enolase Polyclonal Antibody.



Western Blot analysis of HepG2 cells using Enolase Polyclonal Antibody.