

# EPHA2/EPHA3/EPHA4 Antibody



PACO06464

---

## Product Information

**Size:**

50ug

**Reactivity:**

Human, Rat

**Source:**

Rabbit

**Isotype:**

IgG

**Applications:**

ELISA, WB, IF

**Recommended dilutions:**

ELISA:1:40000, WB:1:500-1:2000, IF:1:200-1:1000

**Protein Background:****Gene ID:**

EPHA2/EPHA3/EPHA4

**Uniprot**

P29317/P29320/P54764

**Synonyms:**

EPHA2; ECK; Ephrin type-A receptor 2; Epithelial cell kinase; Tyrosine-protein kinase receptor ECK; EPHA3; ETK; ETK1; HEK; TYRO4; Ephrin type-A receptor 3; EPH-like kinase 4; EK4; hEK4; HEK; Human embryo kinase; Tyrosine-protein kinase TYRO

**Immunogen:**

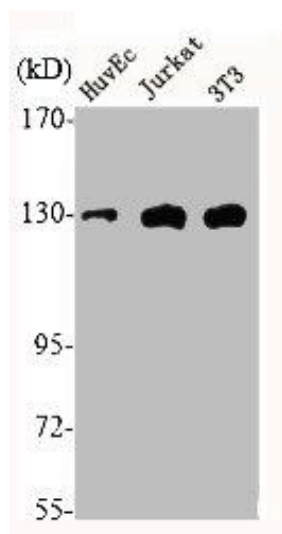
Synthesized peptide derived from human EphA2/3/4 around the non-phosphorylation site of Y588/596.

**Storage:**

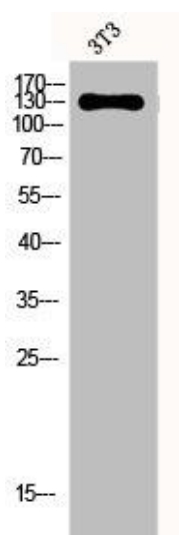
Liquid in PBS containing 50% glycerol, 0.5% BSA and 0.02% sodium azide.

## Product Images

---



Western Blot analysis of K562 cells using EphA2/3/4 Polyclonal Antibody.



Western Blot analysis of 3T3 cells using EphA2/3/4 Polyclonal Antibody.