

# EFNB1/EFNB2 Antibody



PACO06468

---

## Product Information

**Size:**

50ug

**Reactivity:**

Human, Mouse, Rat

**Source:**

Rabbit

**Isotype:**

IgG

**Applications:**

ELISA, WB, IHC

**Recommended dilutions:**

ELISA:1:40000, WB:1:500-1:2000,  
IHC:1:100-1:300

**Protein Background:****Gene ID:**

EFNB1/EFNB2

**Uniprot**

P98172/P52799

**Synonyms:**

EFNB1; EFL3; EPLG2; LERK2; Ephrin-B1; EFL-3; ELK ligand; ELK-L; EPH-related receptor tyrosine kinase ligand 2; LERK-2; EFNB2; EPLG5; HTKL; LERK5; Ephrin-B2; EPH-related receptor tyrosine kinase ligand 5; LERK-5; HTK ligand; HTK-L

**Immunogen:**

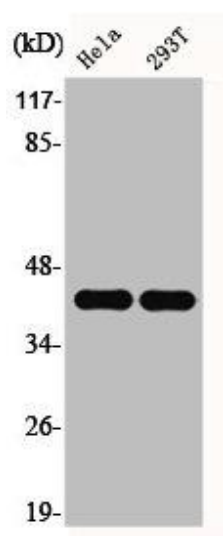
Synthesized peptide derived from human Ephrin-B1/2 around the non-phosphorylation site of Y330.

**Storage:**

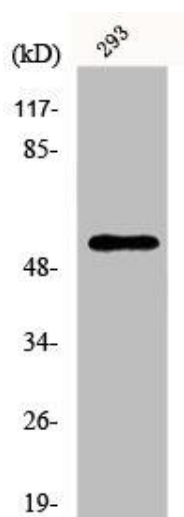
Liquid in PBS containing 50% glycerol, 0.5% BSA and 0.02% sodium azide.

## Product Images

---



Western Blot analysis of HELA 293T cells using Ephrin-B1/2 Polyclonal Antibody.



Western Blot analysis of 293 cells using Ephrin-B1/2 Polyclonal Antibody.