

EPS8L2 Antibody



PACO06469

Product Information

Size:

50ug

Reactivity:

Human, Mouse

Source:

Rabbit

Isotype:

IgG

Applications:

ELISA, WB, IHC, IF

Recommended dilutions:

ELISA:1:40000, WB:1:500-1:2000,
IHC:1:100-1:300, IF:1:200-1:1000

Protein Background:**Gene ID:**

EPS8L2

Uniprot

Q9H6S3

Synonyms:

EPS8L2; EPS8R2; PP13181; Epidermal growth factor receptor kinase substrate 8-like protein 2; EPS8-like protein 2; Epidermal growth factor receptor pathway substrate 8-related protein 2; EPS8-related protein 2

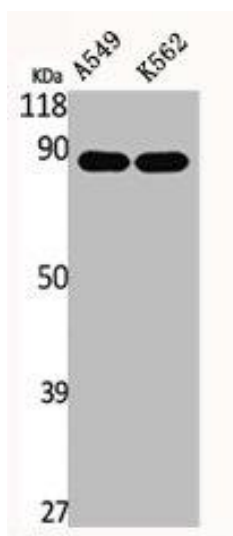
Immunogen:

Synthesized peptide derived from the N-terminal region of human Eps8L2.

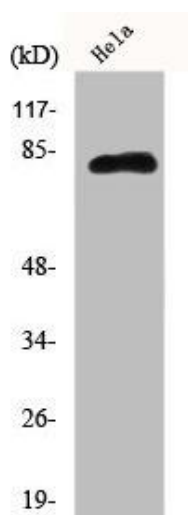
Storage:

Liquid in PBS containing 50% glycerol, 0.5% BSA and 0.02% sodium azide.

Product Images



Western Blot analysis of A549 K562 cells using Eps8L2 Polyclonal Antibody.



Western Blot analysis of HeLa cells using Eps8L2 Polyclonal Antibody.