

ERF Antibody



PACO06474

Product Information

Size:

50ug

Reactivity:

Human, Mouse

Source:

Rabbit

Isotype:

IgG

Applications:

ELISA, WB, IHC, IF

Recommended dilutions:

ELISA:1:10000, WB:1:500-1:2000,
IHC:1:100-1:300, IF:1:200-1:1000

Protein Background:**Gene ID:**

ERF

Uniprot

P50548

Synonyms:

ERF; ETS domain-containing transcription factor ERF; Ets2 repressor factor; PE-2

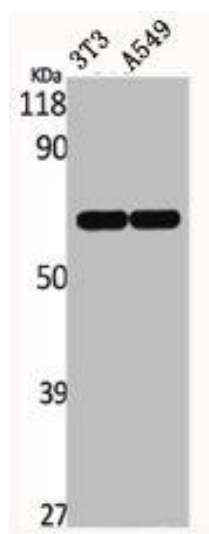
Immunogen:

Synthesized peptide derived from human ERF around the non-phosphorylation site of T526.

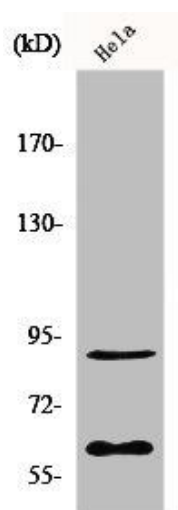
Storage:

Liquid in PBS containing 50% glycerol, 0.5% BSA and 0.02% sodium azide.

Product Images



Western Blot analysis of NIH-3T3 A549 cells using ERF Polyclonal Antibody.



Western Blot analysis of HepG2 cells using ERF Polyclonal Antibody.