

ESR2 Antibody



PACO06478

Product Information

Size:

50ug

Reactivity:

Human, Mouse, Rat

Source:

Rabbit

Isotype:

IgG

Applications:

ELISA, WB, IF

Recommended dilutions:

ELISA:1:10000, WB:1:500-1:2000, IF:1:200-1:1000

Protein Background:

Gene ID:

ESR2

Uniprot

Q92731

Synonyms:

ESR2; ESTRB; NR3A2; Estrogen receptor beta; ER-beta; Nuclear receptor subfamily 3 group A member 2

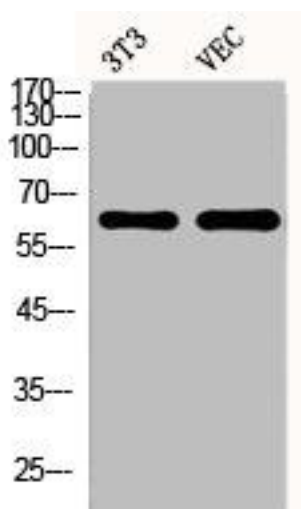
Immunogen:

Synthesized peptide derived from human ER β around the non-phosphorylation site of S105.

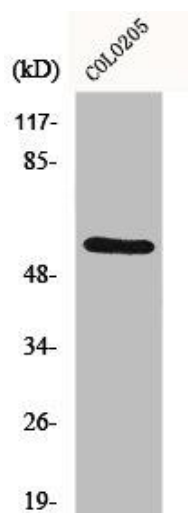
Storage:

Liquid in PBS containing 50% glycerol, 0.5% BSA and 0.02% sodium azide.

Product Images



Western Blot analysis of NIH-3T3 VEC cells using ER beta Polyclonal Antibody.



Western Blot analysis of COLO205 cells using ER beta Polyclonal Antibody.