

FLI1 Antibody



PACO06486

Product Information

Size:

50ug

Reactivity:

Human, Mouse

Source:

Rabbit

Isotype:

IgG

Applications:

ELISA, WB, IHC

Recommended dilutions:

ELISA:1:10000, WB:1:500-1:2000,
IHC:1:100-1:300

Protein Background:

Gene ID:

FLI1

Uniprot

Q01543

Synonyms:

FLI1; Friend leukemia integration 1 transcription factor; Proto-oncogene Fli-1;
Transcription factor ERGB

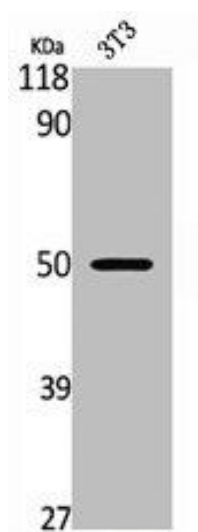
Immunogen:

Synthesized peptide derived from the Internal region of human Fli-1.

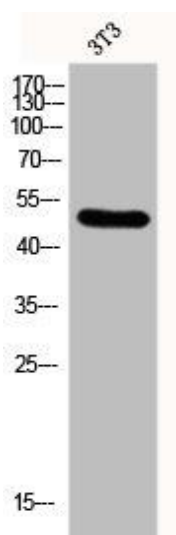
Storage:

Liquid in PBS containing 50% glycerol, 0.5% BSA and 0.02% sodium azide.

Product Images



Western Blot analysis of NIH-3T3 cells using Fli-1 Polyclonal Antibody.



Western Blot analysis of 3T3 cells using Fli-1 Polyclonal Antibody.