

# GPR132 Antibody



PACO06497

---

## Product Information

**Size:**

50ug

**Reactivity:**

Human, Mouse, Monkey

**Source:**

Rabbit

**Isotype:**

IgG

**Applications:**

ELISA, WB, IF

**Recommended dilutions:**

ELISA:1:5000, WB:1:500-1:2000, IF:1:200-1:1000

**Protein Background:****Gene ID:**

GPR132

**Uniprot**

Q9UNW8

**Synonyms:**

GPR132; G2A; Probable G-protein coupled receptor 132; G2 accumulation protein

**Immunogen:**

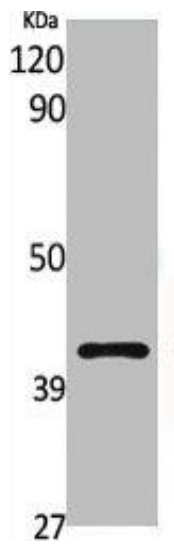
Synthesized peptide derived from the C-terminal region of human G2A.

**Storage:**

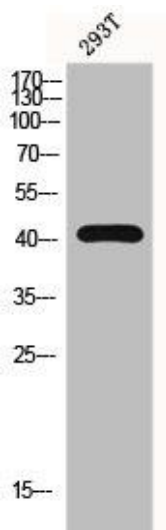
Liquid in PBS containing 50% glycerol, 0.5% BSA and 0.02% sodium azide.

## Product Images

---



Western Blot analysis of various cells using G2A Polyclonal Antibody.



Western Blot analysis of 293T cells using G2A Polyclonal Antibody.