

PACO06506

---

## Product Information

**Size:**

50ug

**Reactivity:**

Human, Mouse, Rat

**Source:**

Rabbit

**Isotype:**

IgG

**Applications:**

ELISA, WB

**Recommended dilutions:**

ELISA:1:10000, WB:1:500-1:2000

**Protein Background:**

**Gene ID:**

GCK

**Uniprot**

P35557

**Synonyms:**

GCK; Glucokinase; Hexokinase type IV; HK IV; Hexokinase-4; HK4; Hexokinase-D

**Immunogen:**

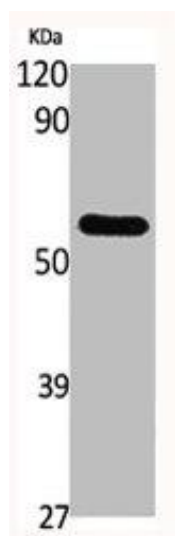
Synthesized peptide derived from the N-terminal region of human GCK.

**Storage:**

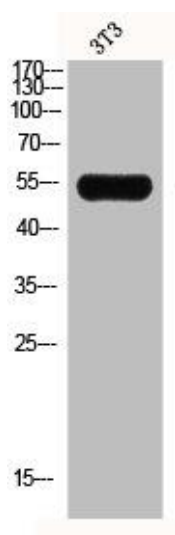
Liquid in PBS containing 50% glycerol, 0.5% BSA and 0.02% sodium azide.

## Product Images

---



Western Blot analysis of various cells using GCK Polyclonal Antibody.



Western Blot analysis of NIH-3T3 cells using GCK Polyclonal Antibody.