

# GNL1 Antibody



PACO06521

---

## Product Information

**Size:**

50ug

**Reactivity:**

Human, Mouse, Rat

**Source:**

Rabbit

**Isotype:**

IgG

**Applications:**

ELISA, WB

**Recommended dilutions:**

ELISA:1:20000, WB:1:500-1:2000

**Protein Background:****Gene ID:**

GNL1

**Uniprot**

P36915

**Synonyms:**

GNL1; HSR1; Guanine nucleotide-binding protein-like 1; GTP-binding protein HSR1

**Immunogen:**

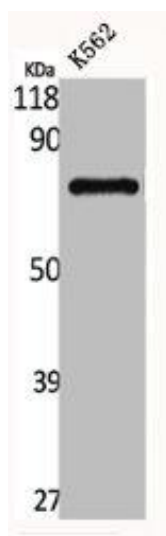
Synthesized peptide derived from the N-terminal region of human GNL1.

**Storage:**

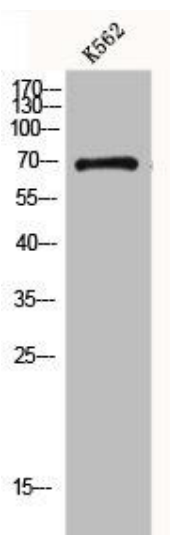
Liquid in PBS containing 50% glycerol, 0.5% BSA and 0.02% sodium azide.

## Product Images

---



Western Blot analysis of K562 cells using GNL1 Polyclonal Antibody.



Western Blot analysis of K562 cells using GNL1 Polyclonal Antibody.