

GPR110 Antibody



PACO06523

Product Information

Size:

50ug

Reactivity:

Human

Source:

Rabbit

Isotype:

IgG

Applications:

ELISA, WB, IF

Recommended dilutions:

ELISA:1:40000, WB:1:500-1:2000, IF:1:200-1:1000

Protein Background:

Gene ID:

ADGRF1

Uniprot

Q5T601

Synonyms:

GPR110; PGR19; Probable G-protein coupled receptor 110; G-protein coupled receptor KPG_012; G-protein coupled receptor PGR19

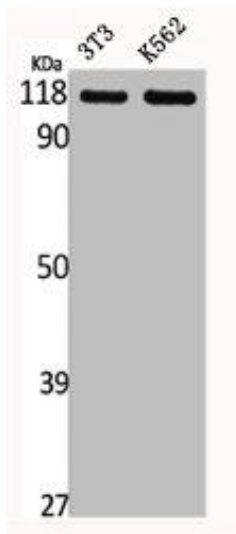
Immunogen:

Synthesized peptide derived from the C-terminal region of human GPR110.

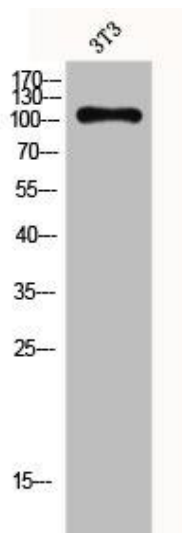
Storage:

Liquid in PBS containing 50% glycerol, 0.5% BSA and 0.02% sodium azide.

Product Images



Western Blot analysis of NIH-3T3 K562 cells using GPR110 Polyclonal Antibody.



Western Blot analysis of 3T3 cells using GPR110 Polyclonal Antibody.