

GRK5 Antibody



PACO06531

Product Information

Size:

50ug

Reactivity:

Human, Mouse, Rat

Source:

Rabbit

Isotype:

IgG

Applications:

ELISA, WB, IHC

Recommended dilutions:

ELISA:1:10000, WB:1:500-1:2000,
IHC:1:100-1:300

Protein Background:**Gene ID:**

GRK5

Uniprot

P34947

Synonyms:

GRK5; GPRK5; G protein-coupled receptor kinase 5; G protein-coupled receptor kinase
GRK5

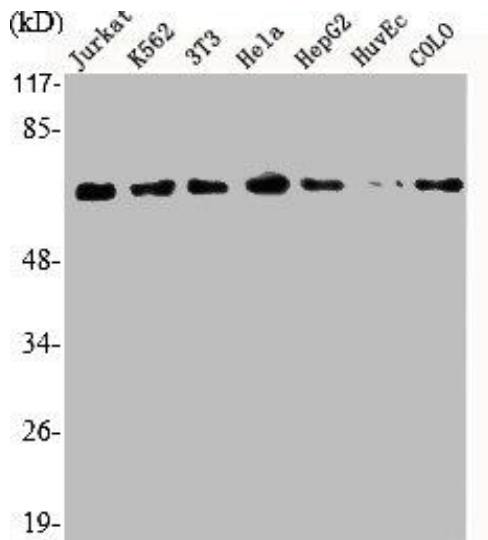
Immunogen:

Synthesized peptide derived from the Internal region of human GRK 5.

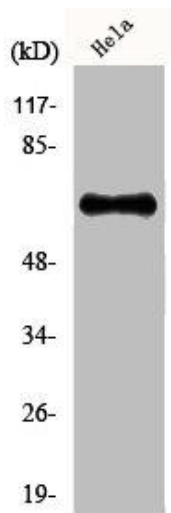
Storage:

Liquid in PBS containing 50% glycerol, 0.5% BSA and 0.02% sodium azide.

Product Images



Western Blot analysis of Jurkat K562 NIH-3T3 HELA HepG2 HuvEc COLO cells using GRK 5 Polyclonal Antibody.



Western Blot analysis of COLO205 cells using GRK 5 Polyclonal Antibody.