

# GSK3A Antibody



PACO06532

---

## Product Information

**Size:**

50ug

**Reactivity:**

Human, Mouse, Rat

**Source:**

Rabbit

**Isotype:**

IgG

**Applications:**

ELISA, WB, IHC, IP

**Recommended dilutions:**

ELISA:1:20000, WB:1:500-1:2000,  
IHC:1:100-1:300, IP:2-5ug

**Protein Background:****Gene ID:**

GSK3A

**Uniprot**

P49840

**Synonyms:**

GSK3A; Glycogen synthase kinase-3 alpha; GSK-3 alpha; Serine/threonine-protein kinase GSK3A

**Immunogen:**

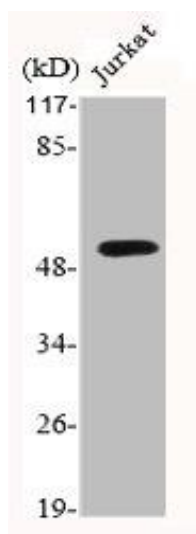
Synthesized peptide derived from human GSK3 &alpha; around the non-phosphorylation site of S21.

**Storage:**

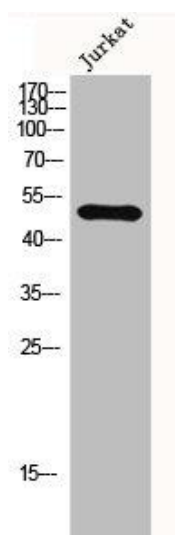
Liquid in PBS containing 50% glycerol, 0.5% BSA and 0.02% sodium azide.

## Product Images

---



Western Blot analysis of Jurkat cells using GSK3 alpha Polyclonal Antibody.



Western Blot analysis of Jurkat cells using GSK3alpha Polyclonal Antibody.