

Histone H1 Antibody



PACO06549

Product Information

Size:

50ug

Reactivity:

Human, Mouse

Source:

Rabbit

Isotype:

IgG

Applications:

ELISA, WB, IHC, IF

Recommended dilutions:

ELISA:1:20000, WB:1:500-1:2000,
IHC:1:100-1:300, IF:1:200-1:1000

Protein Background:**Gene ID:**

HIST1H1B/HIST1H1D/HIST1H1E

Uniprot

P16401/P16402/P10412

Synonyms:

HIST1H1B; H1F5; Histone H1.5; Histone H1a; Histone H1b; Histone H1s-3; HIST1H1D;
H1F3; Histone H1.3; Histone H1c; Histone H1s-2; HIST1H1E; H1F4; Histone H1.4;
Histone H1b; Histone H1s-4

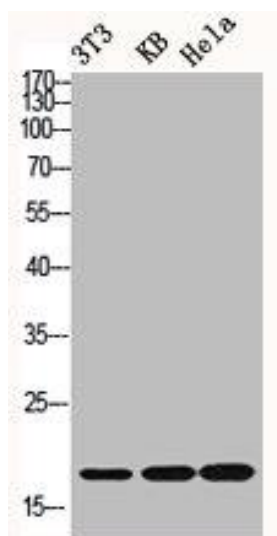
Immunogen:

Synthesized peptide derived from human Histone H1 around the non-phosphorylation site of T17.

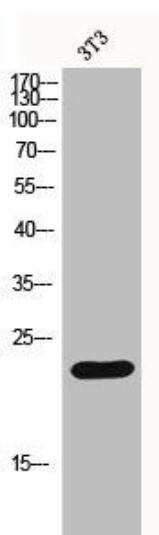
Storage:

Liquid in PBS containing 50% glycerol, 0.5% BSA and 0.02% sodium azide.

Product Images



Western Blot analysis of NIH-3T3 KB HeLa cells using Histone H1 Polyclonal Antibody.



Western Blot analysis of 3T3 cells using Histone H1 Polyclonal Antibody.