

Histone H2B Antibody



PACO06552

Product Information

Size:

50ug

Reactivity:

Human, Mouse

Source:

Rabbit

Isotype:

IgG

Applications:

ELISA, WB, IHC, IF

Recommended dilutions:

ELISA:1:20000, WB:1:500-1:2000,
IHC:1:100-1:300, IF:1:200-1:1000

Protein Background:**Gene ID:**

HIST1H2BC/HIST1H2BJ/HIST2H2BE/H2BFS

Uniprot

P62807/P06899/Q16778/P57053

Synonyms:

HIST1H2BC; H2BFL; HIST1H2BE; H2BFH; HIST1H2BF; H2BFG; HIST1H2BG; H2BFA;
HIST1H2BI; H2BFK; Histone H2B type 1-C/E/F/G/I; Histone H2B.1 A; Histone H2B. a;
H2B/a; Histone H2B. g; H2B/g; Histone H2B. h; H2B/h; Histone H2B. k; H2B/k; Histone
H2B. l;

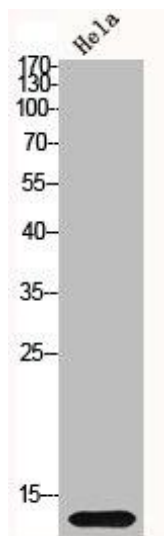
Immunogen:

Synthesized peptide derived from human Histone H2B around the non-acetylation site of K5.

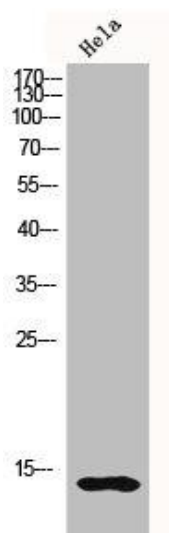
Storage:

Liquid in PBS containing 50% glycerol, 0.5% BSA and 0.02% sodium azide.

Product Images



Western Blot analysis of HELA cells using Histone H2B Polyclonal Antibody.



Western Blot analysis of HELA cells using Histone H2B Polyclonal Antibody.