

# Histone H3 Antibody



PACO06553

---

## Product Information

**Size:**

50ug

**Reactivity:**

Human, Mouse, Rat, Monkey

**Source:**

Rabbit

**Isotype:**

IgG

**Applications:**

ELISA, WB, IHC, IF

**Recommended dilutions:**

ELISA:1:5000, WB:1:500-1:2000, IHC:1:100-1:300, IF:1:200-1:1000

**Protein Background:****Gene ID:**

HIST1H3A/HIST2H3A/H3F3A

**Uniprot**

P68431/Q71DI3/P84243

**Synonyms:**

HIST1H3A; H3FA; HIST1H3B; H3FL; HIST1H3C; H3FC; HIST1H3D; H3FB; HIST1H3E; H3FD; HIST1H3F; H3FI; HIST1H3G; H3FH; HIST1H3H; H3FK; HIST1H3I; H3FF; HIST1H3J; H3FJ; Histone H3.1; Histone H3/a; Histone H3/b; Histone H3/c; Histone H3/d; Histone H3

**Immunogen:**

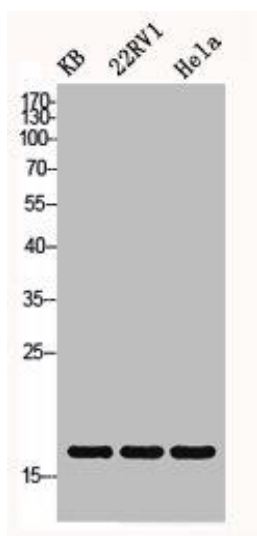
Synthesized peptide derived from human Histone H3 around the non-acetylation site of K27.

**Storage:**

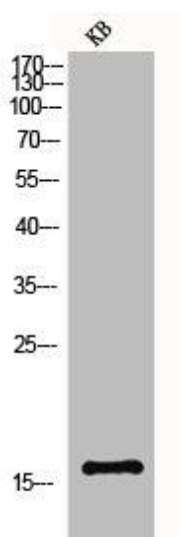
Liquid in PBS containing 50% glycerol, 0.5% BSA and 0.02% sodium azide.

## Product Images

---



Western Blot analysis of KB 22RV1 HELA cells using Histone H3 Polyclonal Antibody.



Western Blot analysis of KB cells using Histone H3 Polyclonal Antibody.