

# HMGB1 Antibody



PACO06555

---

## Product Information

**Size:**

50ug

**Reactivity:**

Human, Mouse, Rat

**Source:**

Rabbit

**Isotype:**

IgG

**Applications:**

ELISA, WB, IHC, IF

**Recommended dilutions:**

ELISA:1:20000, WB:1:500-1:2000,  
IHC:1:100-1:300, IF:1:200-1:1000

**Protein Background:****Gene ID:**

HMGB1

**Uniprot**

P09429

**Synonyms:**

HMGB1; HMG1; High mobility group protein B1; High mobility group protein 1; HMG-1

**Immunogen:**

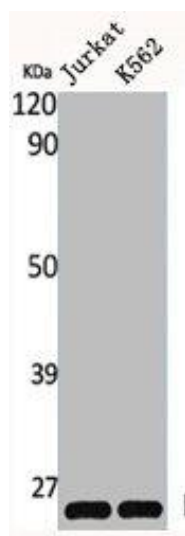
Synthesized peptide derived from the Internal region of human HMG-1.

**Storage:**

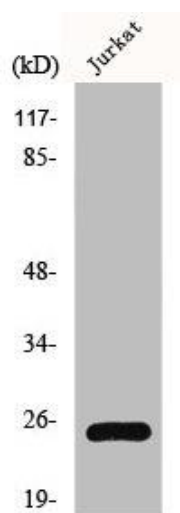
Liquid in PBS containing 50% glycerol, 0.5% BSA and 0.02% sodium azide.

## Product Images

---



Western Blot analysis of Jurkat K562 cells using HMG-1 Polyclonal Antibody.



Western Blot analysis of 293 cells using HMG-1 Polyclonal Antibody.