

# HSPA8 Antibody



PACO06562

---

## Product Information

**Size:**

50ug

**Reactivity:**

Human, Mouse, Rat

**Source:**

Rabbit

**Isotype:**

IgG

**Applications:**

ELISA, WB

**Recommended dilutions:**

ELISA:1:10000, WB:1:500-1:2000

**Protein Background:****Gene ID:**

HSPA8

**Uniprot**

P11142

**Synonyms:**

HSPA8; HSC70; HSP73; HSPA10; Heat shock cognate 71 kDa protein; Heat shock 70 kDa protein 8

**Immunogen:**

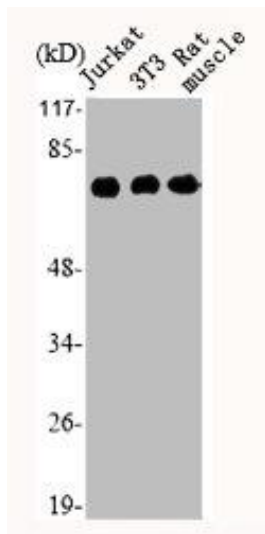
Synthesized peptide derived from the Internal region of human HSC 70.

**Storage:**

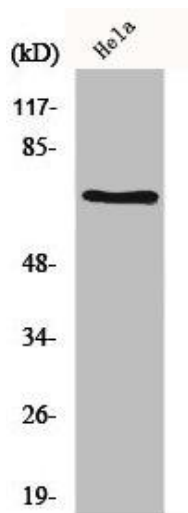
Liquid in PBS containing 50% glycerol, 0.5% BSA and 0.02% sodium azide.

## Product Images

---



Western Blot analysis of Jurkat cells, NIH-3T3 cells, Rat muscle using HSC 70 Polyclonal Antibody.



Western Blot analysis of HeLa cells using HSC 70 Polyclonal Antibody.