

# HSPA5 Antibody



PACO06565

---

## Product Information

**Size:**

50ug

**Reactivity:**

Human, Mouse, Rat, Monkey

**Source:**

Rabbit

**Isotype:**

IgG

**Applications:**

ELISA, WB, IHC, IF

**Recommended dilutions:**

ELISA:1:20000, WB:1:500-1:2000,  
IHC:1:100-1:300, IF:1:200-1:1000

**Protein Background:**

**Gene ID:**

HSPA5

**Uniprot**

P11021

**Synonyms:**

HSPA5; GRP78; 78 kDa glucose-regulated protein; GRP-78; Endoplasmic reticulum lumenal Ca(2+)-binding protein grp78; Heat shock 70 kDa protein 5; Immunoglobulin heavy chain-binding protein; BiP

**Immunogen:**

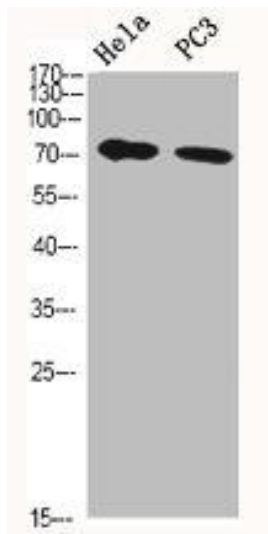
Synthesized peptide derived from the C-terminal region of human HSP A5.

**Storage:**

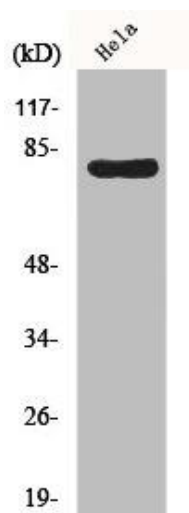
Liquid in PBS containing 50% glycerol, 0.5% BSA and 0.02% sodium azide.

## Product Images

---



Western Blot analysis of HeLa cells, PC-3 cells using HSP A5 Polyclonal Antibody.



Western Blot analysis of HeLa cells using HSP A5 Polyclonal Antibody.