

HSPD1 Antibody



PACO06568

Product Information

Size:

50ug

Reactivity:

Human, Mouse, Rat

Source:

Rabbit

Isotype:

IgG

Applications:

ELISA, WB, IHC, IF

Recommended dilutions:

ELISA:1:10000, WB:1:500-1:2000,
IHC:1:100-1:300, IF:1:200-1:1000

Protein Background:

Gene ID:

HSPD1

Uniprot

P10809

Synonyms:

HSPD1; HSP60; 60 kDa heat shock protein; mitochondrial; 60 kDa chaperonin; Chaperonin 60; CPN60; Heat shock protein 60; HSP-60; Hsp60; HuCHA60; Mitochondrial matrix protein P1; P60 lymphocyte protein

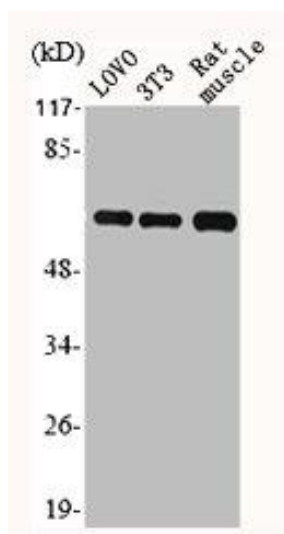
Immunogen:

Synthesized peptide derived from the C-terminal region of human HSP60.

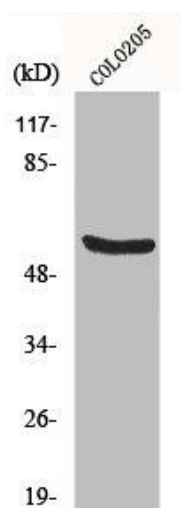
Storage:

Liquid in PBS containing 50% glycerol, 0.5% BSA and 0.02% sodium azide.

Product Images



Western Blot analysis of LOVO NIH-3T3 RAT-MUSCLE cells using HSP60 Polyclonal Antibody.



Western Blot analysis of COLO205 cells using HSP60 Polyclonal Antibody.