

PACO06578

Product Information

Size:

50ug

Reactivity:

Human, Mouse, Rat

Source:

Rabbit

Isotype:

IgG

Applications:

ELISA, WB, IHC

Recommended dilutions:

ELISA:1:20000, WB:1:500-1:2000,
IHC:1:100-1:300

Protein Background:

Gene ID:

IK

Uniprot

Q13123

Synonyms:

IK; RED; RER; Protein Red; Cytokine IK; IK factor; Protein RER

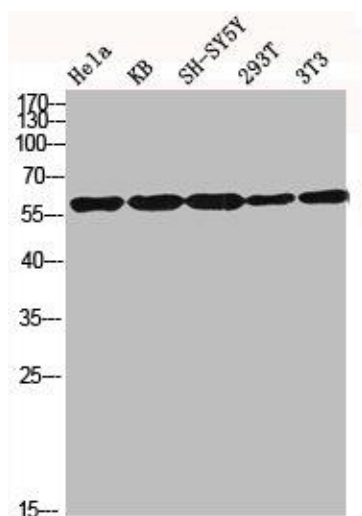
Immunogen:

Synthesized peptide derived from the C-terminal region of human IK.

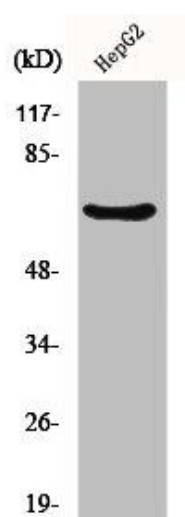
Storage:

Liquid in PBS containing 50% glycerol, 0.5% BSA and 0.02% sodium azide.

Product Images



Western blot analysis of HELA KB SH-SY5Y 293T 3T3 lysis using IK antibody.



Western Blot analysis of HeLa cells using IK Polyclonal Antibody.