

PACO06580

Product Information

Size:

50ug

Reactivity:

Human, Mouse, Rat

Source:

Rabbit

Isotype:

IgG

Applications:

ELISA, WB, IHC

Recommended dilutions:

ELISA:1:20000, WB:1:500-1:2000,
IHC:1:100-1:300

Protein Background:**Gene ID:**

CHUK/IKBKB

Uniprot

O15111/O14920

Synonyms:

CHUK; IKKA; TCF16; Inhibitor of nuclear factor κ ; -B kinase subunit alpha; I- κ ; -B kinase alpha; IKK-A; IKK-alpha; I κ BKA; I κ B; B kinase; Conserved helix-loop-helix ubiquitous kinase; I- κ ; -B kinase 1; IKK1; Nuclear factor NF- κ ; -B

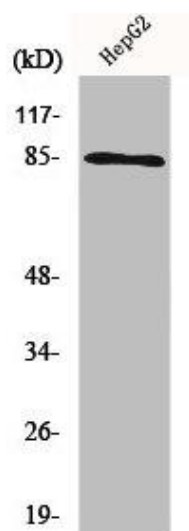
Immunogen:

Synthesized peptide derived from human IKK α / β ; around the non-phosphorylation site of S180/181.

Storage:

Liquid in PBS containing 50% glycerol, 0.5% BSA and 0.02% sodium azide.

Product Images



Western Blot analysis of HepG2 cells using IKKalpha / beta Polyclonal Antibody.