

# COPS5 Antibody



PACO06593

---

## Product Information

**Size:**

50ug

**Reactivity:**

Human, Mouse

**Source:**

Rabbit

**Isotype:**

IgG

**Applications:**

ELISA, WB, IHC

**Recommended dilutions:**

ELISA:1:5000, WB:1:500-1:2000, IHC:1:100-1:300

**Protein Background:**

**Gene ID:**

COPS5

**Uniprot**

Q92905

**Synonyms:**

COPS5; CSN5; JAB1; COP9 signalosome complex subunit 5; SGN5; Signalosome subunit 5; Jun activation domain-binding protein 1

**Immunogen:**

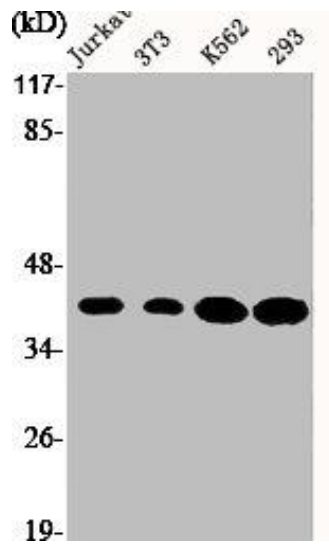
Synthesized peptide derived from the Internal region of human JAB1.

**Storage:**

Liquid in PBS containing 50% glycerol, 0.5% BSA and 0.02% sodium azide.

## Product Images

---



Western Blot analysis of Jurkat NIH-3T3 K562 293 cells using JAB1 Polyclonal Antibody.



Western Blot analysis of K562 cells using JAB1 Polyclonal Antibody.