

KCNC4 Antibody



PACO06608

Product Information

Size:

50ug

Reactivity:

Human, Mouse, Monkey

Source:

Rabbit

Isotype:

IgG

Applications:

ELISA, WB, IHC, IF

Recommended dilutions:

ELISA:1:20000, WB:1:500-1:2000,
IHC:1:100-1:300, IF:1:200-1:1000

Protein Background:

Gene ID:

KCNC4

Uniprot

Q03721

Synonyms:

KCNC4; Potassium voltage-gated channel subfamily C member 4; KSHIIC; Voltage-gated potassium channel subunit Kv3.4

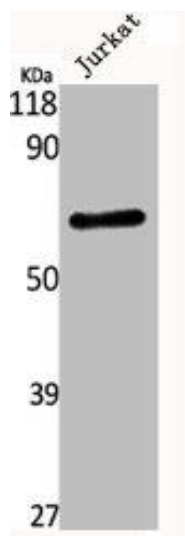
Immunogen:

Synthesized peptide derived from human Kv3.4 around the non-phosphorylation site of S15.

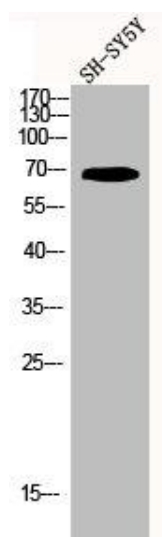
Storage:

Liquid in PBS containing 50% glycerol, 0.5% BSA and 0.02% sodium azide.

Product Images



Western Blot analysis of Jurkat cells using Kv3.4 Polyclonal Antibody.



Western Blot analysis of SH-SY5Y cells using Kv3.4 Polyclonal Antibody.