

# ARHGEF2 Antibody



PACO06613

---

## Product Information

**Size:**

50ug

**Reactivity:**

Human, Mouse, Rat

**Source:**

Rabbit

**Isotype:**

IgG

**Applications:**

ELISA, WB

**Recommended dilutions:**

ELISA:1:5000, WB:1:500-1:2000

**Protein Background:**

**Gene ID:**

ARHGEF2

**Uniprot**

Q92974

**Synonyms:**

ARHGEF2; KIAA0651; LFP40; Rho guanine nucleotide exchange factor 2; Guanine nucleotide exchange factor H1; GEF-H1; Microtubule-regulated Rho-GEF; Proliferating cell nucleolar antigen p40

**Immunogen:**

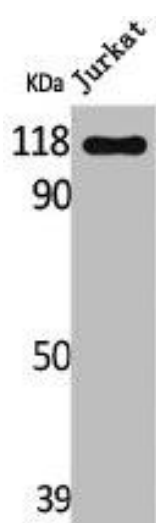
Synthesized peptide derived from human Lfc around the non-phosphorylation site of S885.

**Storage:**

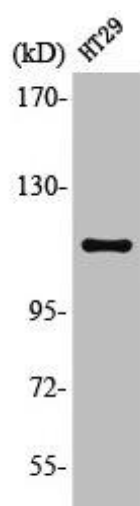
Liquid in PBS containing 50% glycerol, 0.5% BSA and 0.02% sodium azide.

## Product Images

---



Western Blot analysis of Jurkat cells using Lfc Polyclonal Antibody.



Western Blot analysis of HT29 cells using Lfc Polyclonal Antibody.