

# LILRA1 Antibody



PACO06615

---

## Product Information

**Size:**

50ug

**Reactivity:**

Human

**Source:**

Rabbit

**Isotype:**

IgG

**Applications:**

ELISA, WB, IF

**Recommended dilutions:**

ELISA:1:20000, WB:1:500-1:2000, IF:1:200-1:1000

**Protein Background:**

**Gene ID:**

LILRA1

**Uniprot**

O75019

**Synonyms:**

LILRA1; LIR6; Leukocyte immunoglobulin-like receptor subfamily A member 1; CD85 antigen-like family member I; Leukocyte immunoglobulin-like receptor 6; LIR-6; CD antigen CD85i

**Immunogen:**

Synthesized peptide derived from the Internal region of human LIR-6.

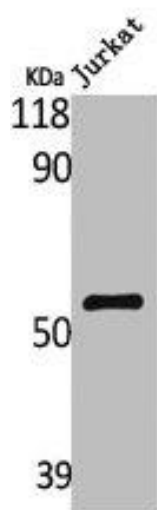
**Storage:**

Liquid in PBS containing 50% glycerol, 0.5% BSA and 0.02% sodium azide.

## Product Images

---

Western Blot analysis of Jurkat cells using LIR-6 Polyclonal Antibody.



Western Blot analysis of MCF7 cells using LIR-6 Polyclonal Antibody.

