

# LRG1 Antibody



PACO06617

---

## Product Information

**Size:**

50ug

**Reactivity:**

Human

**Source:**

Rabbit

**Isotype:**

IgG

**Applications:**

ELISA, WB

**Recommended dilutions:**

ELISA:1:5000, WB:1:500-1:2000

**Protein Background:**

**Gene ID:**

LRG1

**Uniprot**

P02750

**Synonyms:**

LRG1; LRG; Leucine-rich alpha-2-glycoprotein; LRG

**Immunogen:**

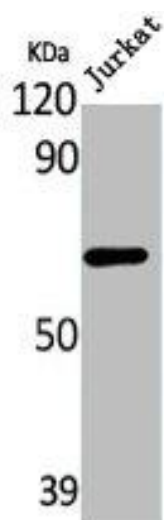
Synthesized peptide derived from the C-terminal region of human LRG1.

**Storage:**

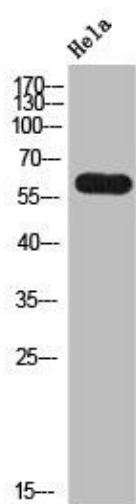
Liquid in PBS containing 50% glycerol, 0.5% BSA and 0.02% sodium azide.

## Product Images

---



Western Blot analysis of Jurkat cells using LRG1 Polyclonal Antibody.



Western Blot analysis of HeLa cells using LRG1 Polyclonal Antibody.