

MAD2L1 Antibody



PACO06622

Product Information

Size:

50ug

Reactivity:

Human

Source:

Rabbit

Isotype:

IgG

Applications:

ELISA, WB

Recommended dilutions:

ELISA:1:5000, WB:1:500-1:2000

Protein Background:

Gene ID:

MAD2L1

Uniprot

Q13257

Synonyms:

MAD2L1; MAD2; Mitotic spindle assembly checkpoint protein MAD2A; HsMAD2; Mitotic arrest deficient 2-like protein 1; MAD2-like protein 1

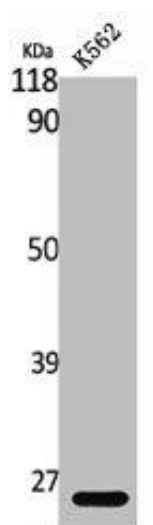
Immunogen:

Synthesized peptide derived from the Internal region of human MAD2.

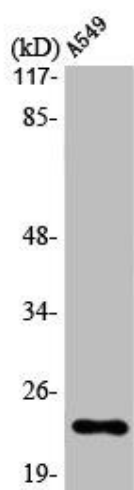
Storage:

Liquid in PBS containing 50% glycerol, 0.5% BSA and 0.02% sodium azide.

Product Images



Western Blot analysis of K562 cells using MAD2 Polyclonal Antibody.



Western Blot analysis of A549 cells using MAD2 Polyclonal Antibody.