

# MAOA Antibody



PACO06624

---

## Product Information

**Size:**

50ug

**Reactivity:**

Human, Mouse, Rat

**Source:**

Rabbit

**Isotype:**

IgG

**Applications:**

ELISA, WB, IHC

**Recommended dilutions:**

ELISA:1:20000, WB:1:500-1:2000,  
IHC:1:100-1:300

**Protein Background:****Gene ID:**

MAOA

**Uniprot**

P21397

**Synonyms:**

MAOA; Amine oxidase [flavin-containing] A; Monoamine oxidase type A; MAO-A

**Immunogen:**

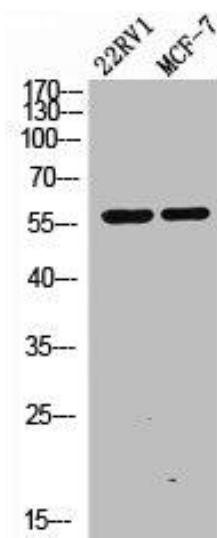
Synthesized peptide derived from the Internal region of human MAO-A.

**Storage:**

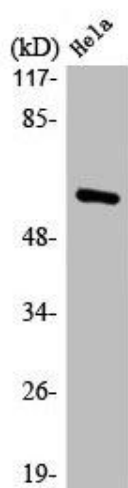
Liquid in PBS containing 50% glycerol, 0.5% BSA and 0.02% sodium azide.

## Product Images

---



Western Blot analysis of 22RV1 MCF7 cells using MAO-A Polyclonal Antibody.



Western Blot analysis of HeLa cells using MAO-A Polyclonal Antibody.