

MDM2 Antibody



PACO06630

Product Information

Size:

50ug

Reactivity:

Human, Mouse, Monkey

Source:

Rabbit

Isotype:

IgG

Applications:

ELISA, WB, IHC, IF

Recommended dilutions:

ELISA:1:5000, WB:1:500-1:2000, IHC:1:100-1:300, IF:1:200-1:1000

Protein Background:

Gene ID:

MDM2

Uniprot

Q00987

Synonyms:

MDM2; E3 ubiquitin-protein ligase Mdm2; Double minute 2 protein; Hdm2; Oncoprotein Mdm2; p53-binding protein Mdm2

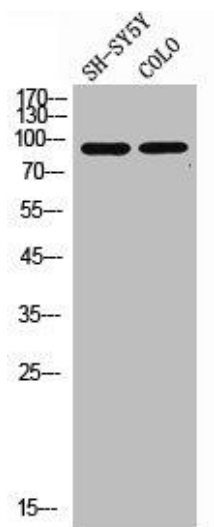
Immunogen:

Synthesized peptide derived from human MDM2 around the non-phosphorylation site of S166.

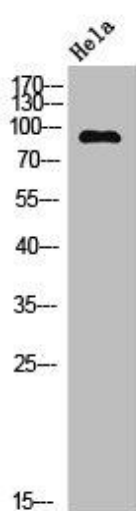
Storage:

Liquid in PBS containing 50% glycerol, 0.5% BSA and 0.02% sodium azide.

Product Images



Western Blot analysis of COLO SH-SY5Y cells using MDM2 Polyclonal Antibody.



Western Blot analysis of HeLa cells using MDM2 Polyclonal Antibody.