

# MAP2K3 Antibody



PACO06632

---

## Product Information

**Size:**

50ug

**Reactivity:**

Human, Mouse, Rat

**Source:**

Rabbit

**Isotype:**

IgG

**Applications:**

ELISA, WB

**Recommended dilutions:**

ELISA:1:5000, WB:1:500-1:2000

**Protein Background:**

**Gene ID:**

MAP2K3

**Uniprot**

P46734

**Synonyms:**

MAP2K3; MEK3; MKK3; PRKMK3; SKK2; Dual specificity mitogen-activated protein kinase kinase 3; MAP kinase kinase 3; MAPKK 3; MAPK/ERK kinase 3; MEK 3; Stress-activated protein kinase kinase 2; SAPK kinase 2; SAPKK-2; SAPKK2

**Immunogen:**

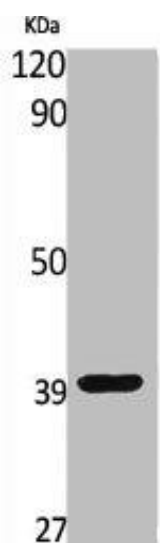
Synthesized peptide derived from human MEK-3 around the non-phosphorylation site of T222.

**Storage:**

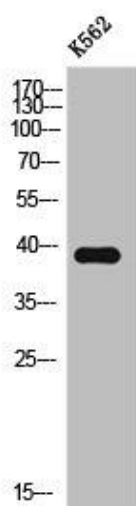
Liquid in PBS containing 50% glycerol, 0.5% BSA and 0.02% sodium azide.

## Product Images

---



Western Blot analysis of various cells using MEK-3 Polyclonal Antibody.



Western Blot analysis of K562 cells using MEK-3 Polyclonal Antibody.